



# Certificate of Analysis

## CANNABUSINESS LABORATORIES, LLC

### Customer:

HYPERNOVATN, LLC  
4738 Gateway Circle, Gate K  
Kettering, OH 45440

Received Date **3/1/2023**

COA Released **3/6/2023**

Comments

Sample ID **230301048**

Order Number **CB230301008**

Sample Name **#2 Full 1500mg Tinct**

External Sample ID **Full Spec Peppermint Tinct**

Batch Number **01202023HN030369FT**

Product Type **Other**

Sample Type **Other**

### CANNABINOID PROFILE

Analyte	LOQ (%)	% Weight	mg/g
CBC	0.01	0.129	1.288
CBD	0.01	4.516	45.16
CBDa	0.01	0.012	0.119
CBDV	0.01	0.020	0.201
CBG	0.01	0.036	0.359
CBGa	0.01	ND	ND
CBN	0.01	0.014	0.137
d8-THC	0.01	ND	ND
d9-THC	0.01	0.131	1.313
THCa	0.01	ND	ND
<b>Total Cannabinoids</b>		<b>4.858</b>	<b>48.58</b>
<b>Total Potential THC</b>		<b>0.131</b>	<b>1.313</b>
<b>Total Potential CBD</b>		<b>4.527</b>	<b>45.27</b>
<b>Total Potential CBG</b>		<b>0.036</b>	<b>0.359</b>

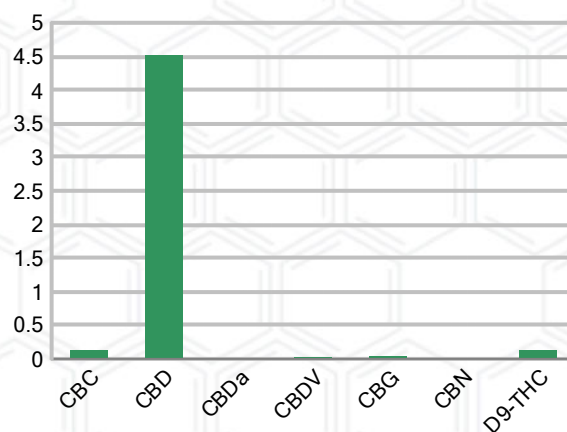
**Ratio of Total Potential CBD to Total Potential THC** **34.56 : 1**

**Ratio of Total Potential CBG to Total Potential THC** **0.28 : 1**

### SAMPLE IMAGE



### CANNABINOIDS % Weight



\*Total Cannabinoids refers to the sum of all cannabinoids detected.

\*Total Potential CBD = (0.877 x CBDa) + CBD. \*Total Potential THC = (0.877 x THCa) + THC. \*Total Potential CBG = (0.877 x CBGa) + CBG.

\*Total Potential THC/CBD are calculated to take into account the loss of an acid group during decarboxylation.



*J. Hobgood*  
Laboratory Manager

SIGNATURE

Jamie Hobgood

LABORATORY MANAGER

03/06/2023 1:01 PM

DATE

This product has been tested by CannaBusiness Laboratories using validated testing methodologies and a quality system. Values reported relate only to the product tested. CannaBusiness Laboratories makes no claims as to the efficacy, safety, or other risks associated with any detected or non-detected levels of any compounds reported herein. This Certificate shall not be reproduced except in full, without the written permission of CannaBusiness Laboratories. Photo is of sample received by the lab and may vary from final packaging. The results apply to the sample as received.



# Certificate of Analysis

## CANNABUSINESS LABORATORIES, LLC

### Customer

HYPERNOVATN, LLC  
4738 Gateway Circle, Gate K  
Kettering, OH 45440



**Sample Name:** #2 Full 1500mg Tinc

**Sample ID:** 230301048

**Order Number:** CB230301008

**Product Type:** Other

**Sample Type:** Other

**Received Date:** 03/01/2023

**Batch Number:** 01202023HN030369FT

**COA released:** 03/06/2023 1:01 PM

### Potency (mg/g)

Date Tested: 03/03/2023

Method: CB-SOP-028

Instrument:

<b>0.131 %</b>	<b>4.527 %</b>	<b>4.858 %</b>	<b>48.58 mg/g</b>
Total THC	Total CBD	Total Cannabinoids	Total Cannabinoids

Analyte	Result	Units	LOQ	Result	Units
CBC (Cannabichromene)	0.129	%	0.010	1.288	mg/g
CBD (Cannabidiol)	4.516	%	0.010	45.16	mg/g
CBDa (Cannabidiolic Acid)	0.012	%	0.010	0.119	mg/g
CBDV (Cannabidivarin)	0.020	%	0.010	0.201	mg/g
CBG (Cannabigerol)	0.036	%	0.010	0.359	mg/g
CBGa (Cannabigerolic Acid)	ND	%	0.010	ND	mg/g
CBN (Cannabinol)	0.014	%	0.010	0.137	mg/g
D8-THC (D8-Tetrahydrocannabinol)	ND	%	0.010	ND	mg/g
D9-THC (D9-Tetrahydrocannabinol)	0.131	%	0.010	1.313	mg/g
THCa (Tetrahydrocannabinolic Acid)	ND	%	0.010	ND	mg/g



*J. Hobgood*  
Laboratory Manager

Jamie Hobgood

03/06/2023 1:01 PM

SIGNATURE

DATE

NT = Not tested, ND = Not detected; LOQ = Limit of Quantitation; <LOQ = Detected; >ULOL = Above upper limit of linearity; CFU/g = Colony forming units per 1 gram; TNTC = Too numerous to count

This product has been tested by CannaBusiness Laboratories using validated testing methodologies and a quality system. Values reported relate only to the product tested. CannaBusiness Laboratories makes no claims as to the efficacy, safety, or other risks associated with any detected or non-detected levels of any compounds reported herein. This Certificate shall not be reproduced except in full, without the written permission of CannaBusiness Laboratories. Photo is of sample received by the lab and may vary from final packaging. The results apply to the sample as received.