



Certificate of Analysis

CANNABUSINESS LABORATORIES, LLC

Customer:

HYPERNOVATN, LLC
4738 Gateway Circle, Gate K
Kettering, OH 45440

Received Date **7/10/2023**

COA Released **7/11/2023**

Comments

Sample ID **230710004**

Order Number **CB230710005**

Sample Name **Gummy Sample**

External Sample ID

Batch Number **07052023HN211112G01**

Product Type **Edible**

Sample Type **Edible**

CANNABINOID PROFILE (Product Size = 2.56 g)

Analyte	LOQ (%)	% Weight	mg/g	mg/unit
CBC	0.01	0.065	0.654	1.67
CBD	0.01	0.896	8.962	22.94
CBDa	0.01	ND	ND	ND
CBDV	0.01	ND	ND	ND
CBG	0.01	0.011	0.110	0.28
CBGa	0.01	ND	ND	ND
CBN	0.01	ND	ND	ND
d8-THC	0.01	ND	ND	ND
d9-THC	0.01	0.036	0.357	0.91
THCa	0.01	ND	ND	ND
Total Cannabinoids		1.008	10.08	25.80
Total Potential THC		0.036	0.357	0.91
Total Potential CBD		0.896	8.962	22.94
Total Potential CBG		0.011	0.110	0.28

Ratio of Total Potential CBD to Total Potential THC **24.89 : 1**

Ratio of Total Potential CBG to Total Potential THC **0.31 : 1**

**Total Cannabinoids refers to the sum of all cannabinoids detected.*

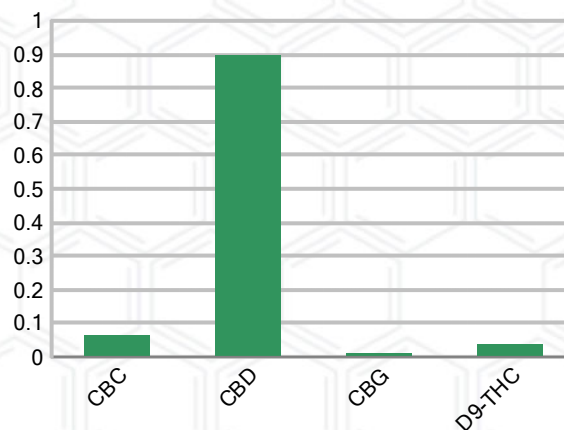
**Total Potential CBD = (0.877 x CBDa) + CBD. *Total Potential THC = (0.877 x THCa) + THC. *Total Potential CBG = (0.877 x CBGa) + CBG.*

**Total Potential THC/CBD are calculated to take into account the loss of an acid group during decarboxylation.*

SAMPLE IMAGE



CANNABINOIDS % Weight



J. Hobgood
Laboratory Manager

SIGNATURE

Jamie Hobgood

LABORATORY MANAGER

07/11/2023 11:17 AM

DATE

This product has been tested by CannaBusiness Laboratories using validated testing methodologies and a quality system. Values reported relate only to the product tested. CannaBusiness Laboratories makes no claims as to the efficacy, safety, or other risks associated with any detected or non-detected levels of any compounds reported herein. This Certificate shall not be reproduced except in full, without the written permission of CannaBusiness Laboratories. Photo is of sample received by the lab and may vary from final packaging. The results apply to the sample as received.

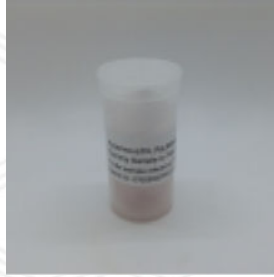


Certificate of Analysis

CANNABUSINESS LABORATORIES, LLC

Customer

HYPERNOVATN, LLC
4738 Gateway Circle, Gate K
Kettering, OH 45440



Sample Name: Gummy Sample

Sample ID: 230710004

Order Number: CB230710005

Product Type: Edible

Sample Type: Edible

Received Date: 07/10/2023

Batch Number: 07052023HN211112G01

COA released: 07/11/2023 11:17 AM

Potency (mg/g)

Date Tested: 07/10/2023

Method: CB-SOP-028

Instrument:

0.036 %	0.896 %	1.008 %	10.08 mg/g
Total THC	Total CBD	Total Cannabinoids	Total Cannabinoids

Analyte	Result	Units	LOQ	Result	Units
CBC (Cannabichromene)	0.065	%	0.010	0.654	mg/g
CBD (Cannabidiol)	0.896	%	0.010	8.962	mg/g
CBDa (Cannabidiolic Acid)	ND	%	0.010	ND	mg/g
CBDV (Cannabidivarin)	ND	%	0.010	ND	mg/g
CBG (Cannabigerol)	0.011	%	0.010	0.110	mg/g
CBGa (Cannabigerolic Acid)	ND	%	0.010	ND	mg/g
CBN (Cannabinol)	ND	%	0.010	ND	mg/g
D8-THC (D8-Tetrahydrocannabinol)	ND	%	0.010	ND	mg/g
D9-THC (D9-Tetrahydrocannabinol)	0.036	%	0.010	0.357	mg/g
THCa (Tetrahydrocannabinolic Acid)	ND	%	0.010	ND	mg/g



J. Hobgood
Laboratory Manager

Jamie Hobgood

07/11/2023 11:17 AM

SIGNATURE

DATE

NT = Not tested, ND = Not detected; LOQ = Limit of Quantitation; <LOQ = Detected; >ULOL = Above upper limit of linearity; CFU/g = Colony forming units per 1 gram; TNTC = Too numerous to count

This product has been tested by CannaBusiness Laboratories using validated testing methodologies and a quality system. Values reported relate only to the product tested. CannaBusiness Laboratories makes no claims as to the efficacy, safety, or other risks associated with any detected or non-detected levels of any compounds reported herein. This Certificate shall not be reproduced except in full, without the written permission of CannaBusiness Laboratories. Photo is of sample received by the lab and may vary from final packaging. The results apply to the sample as received.