



Certificate of Analysis

CANNABUSINESS LABORATORIES, LLC

Customer:

HYPERNOVATN, LLC
4738 Gateway Circle, Gate K
Kettering, OH 45440

Received Date **7/7/2025**

COA Released **7/8/2025**

Comments

Sample ID **250630003**

Order Number **CB250630003**

Sample Name **SeventhSense_Pet_1k**

External Sample ID

Batch Number **062525SSE211022DCT01**

Product Type **Concentrate**

Sample Type **Concentrate**

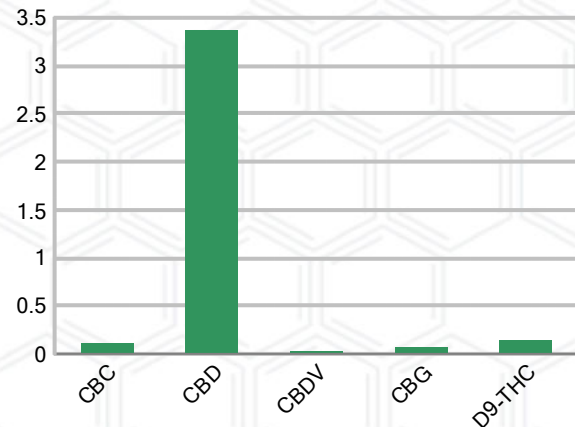
CANNABINOID PROFILE (Product Size = 1 mL)

Analyte	LOQ (%)	% Weight	mg/mL	mL/unit
CBC	0.01	0.113	1.053	1.05
CBD	0.01	3.368	31.32	31.32
CBDa	0.01	ND	ND	ND
CBDV	0.01	0.024	0.227	0.23
CBG	0.01	0.067	0.619	0.62
CBGa	0.01	ND	ND	ND
CBN	0.01	ND	ND	ND
d8-THC	0.01	ND	ND	ND
d9-THC	0.01	0.138	1.279	1.28
THCa	0.01	ND	ND	ND
Total Cannabinoids		3.710	34.50	34.50
Total Potential THC		0.138	1.279	1.28
Total Potential CBD		3.368	31.32	31.32
Total Potential CBG		0.067	0.619	0.62
Ratio of Total Potential CBD to Total Potential THC			24.41	: 1
Ratio of Total Potential CBG to Total Potential THC			0.49	: 1

SAMPLE IMAGE



CANNABINOIDS % Weight



*Total Cannabinoids refers to the sum of all cannabinoids detected.

*Total Potential CBD = (0.877 x CBDa) + CBD. *Total Potential THC = (0.877 x THCa) + THC. *Total Potential CBG = (0.877 x CBGa) + CBG.

*Total Potential THC/CBD are calculated to take into account the loss of an acid group during decarboxylation.



J. Hobgood
Laboratory Manager

SIGNATURE

Jamie Hobgood

LABORATORY MANAGER

07/08/2025 10:13 AM

DATE

This product has been tested by CannaBusiness Laboratories using validated testing methodologies and a quality system. Values reported relate only to the product tested. CannaBusiness Laboratories makes no claims as to the efficacy, safety, or other risks associated with any detected or non-detected levels of any compounds reported herein. This Certificate shall not be reproduced except in full, without the written permission of CannaBusiness Laboratories. Photo is of sample received by the lab and may vary from final packaging. The results apply to the sample as received.





Certificate of Analysis

CANNABUSINESS LABORATORIES, LLC

Customer

HYPERNOVATN, LLC
4738 Gateway Circle, Gate K
Kettering, OH 45440



Sample Name: SeventhSense_Pet_1k

Sample ID: 250630003

Order Number: CB250630003

Product Type: Concentrate

Sample Type: Concentrate

Received Date: 07/07/2025

Batch Number: 062525SSE211022DCT0
1

COA released: 07/08/2025 10:13 AM

Potency (mg/mL)

Date Tested: 07/07/2025

Method: CB-SOP-028

Instrument:

0.138 %	3.368 %	3.710 %	34.50 mg/mL
Total THC	Total CBD	Total Cannabinoids	Total Cannabinoids

Analyte	Result	Units	LOQ	Result	Units
CBC (Cannabichromene)	0.113	%	0.010	1.053	mg/mL
CBD (Cannabidiol)	3.368	%	0.010	31.32	mg/mL
CBDa (Cannabidiolic Acid)	ND	%	0.010	ND	mg/mL
CBDV (Cannabidivarin)	0.024	%	0.010	0.227	mg/mL
CBG (Cannabigerol)	0.067	%	0.010	0.619	mg/mL
CBGa (Cannabigerolic Acid)	ND	%	0.010	ND	mg/mL
CBN (Cannabinol)	ND	%	0.010	ND	mg/mL
D8-THC (D8-Tetrahydrocannabinol)	ND	%	0.010	ND	mg/mL
D9-THC (D9-Tetrahydrocannabinol)	0.138	%	0.010	1.279	mg/mL
THCa (Tetrahydrocannabinolic Acid)	ND	%	0.010	ND	mg/mL



JHobgood
Laboratory Manager

SIGNATURE

Jamie Hobgood

07/08/2025 10:13 AM

DATE

NT = Not tested, ND = Not detected; LOQ = Limit of Quantitation; <LOQ = Detected; >ULOL = Above upper limit of linearity; CFU/g = Colony forming units per 1 gram; TNTC = Too numerous to count

This product has been tested by CannaBusiness Laboratories using validated testing methodologies and a quality system. Values reported relate only to the product tested. CannaBusiness Laboratories makes no claims as to the efficacy, safety, or other risks associated with any detected or non-detected levels of any compounds reported herein. This Certificate shall not be reproduced except in full, without the written permission of CannaBusiness Laboratories. Photo is of sample received by the lab and may vary from final packaging. The results apply to the sample as received.